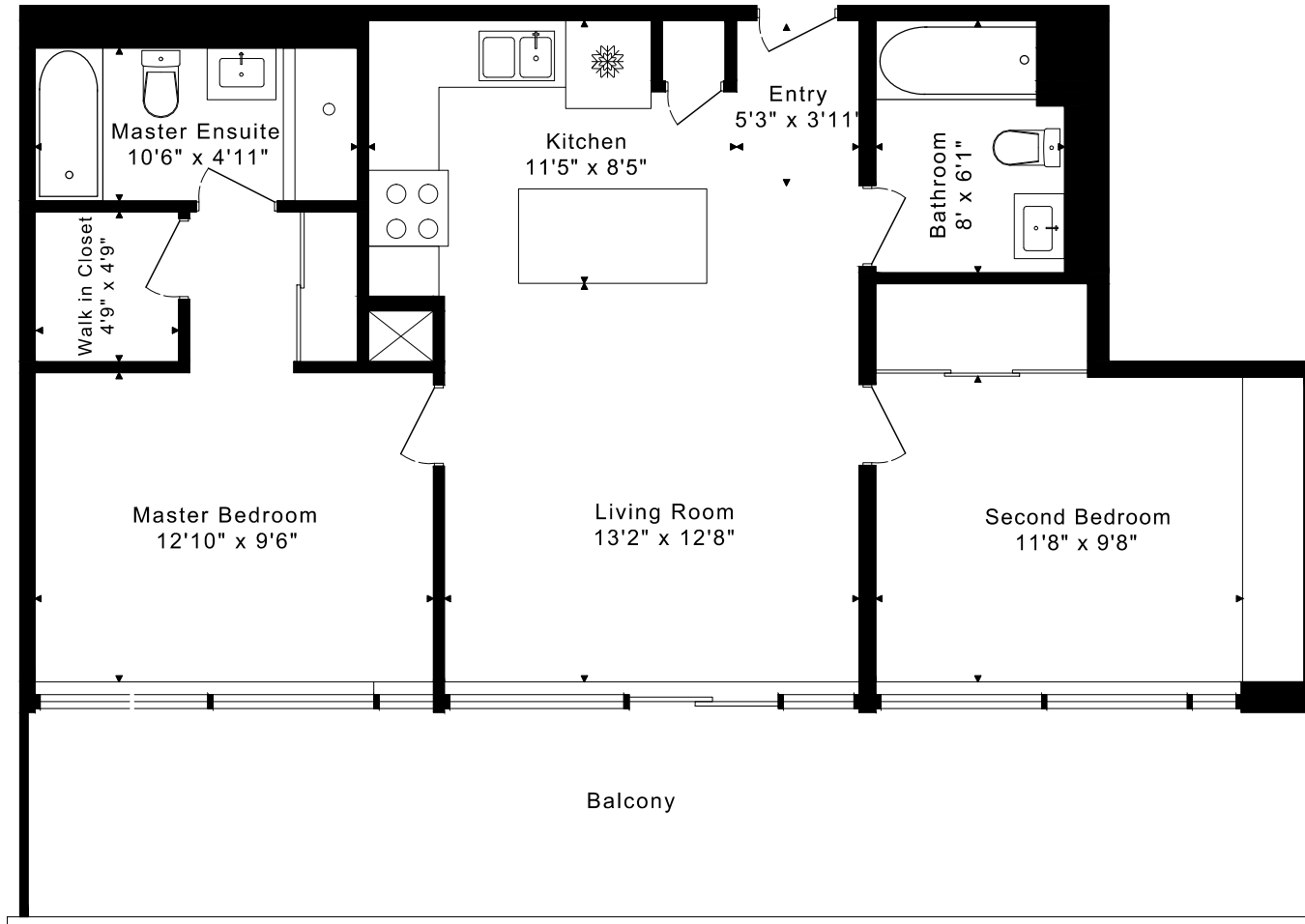


25 OXLEY STREET UNIT 1002 FLOOR PLANS



1,200 Sq. Ft. Total : 860 Sq. Ft. Interior + 340 Sq. Ft. Terrace

CAPTURED ON: 4 SEP 2020
DIMENSIONS ARE APPROXIMATE AND SHOULD BE CONSIDERED
ILLUSTRATIVE ONLY.