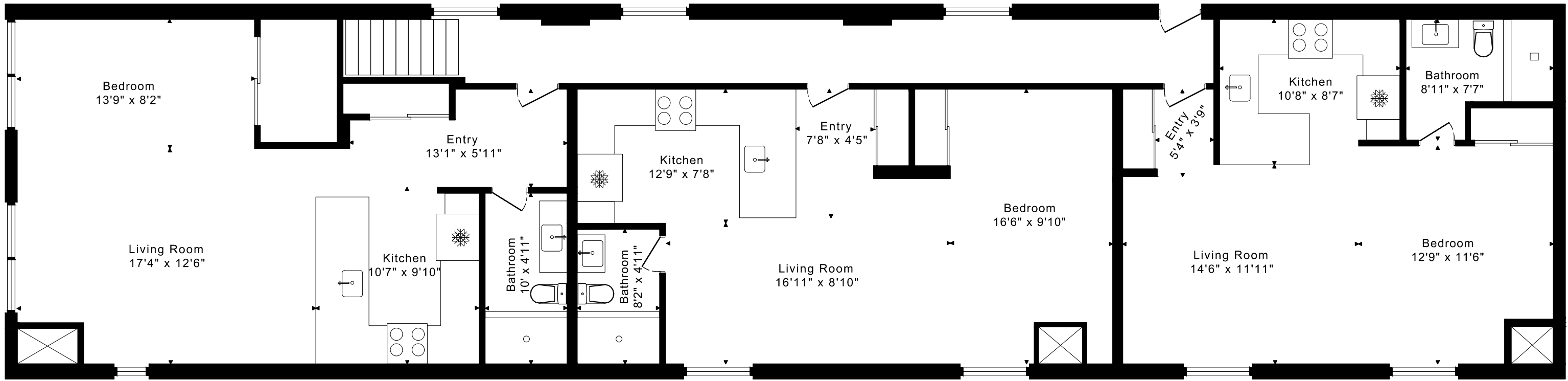
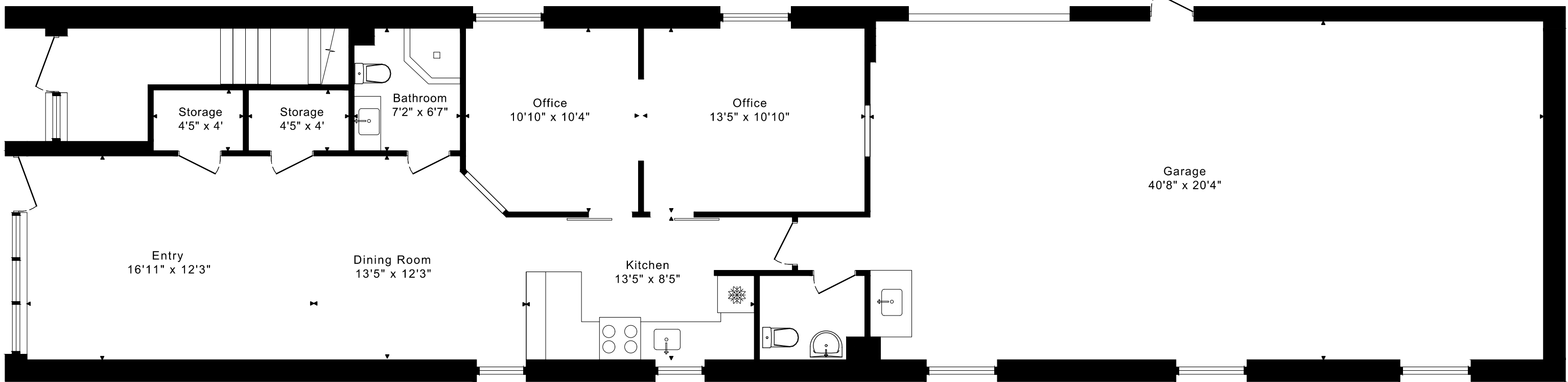


# 1241 WOODBINE AVENUE FLOOR PLANS



**SECOND FLOOR**  
2110 SQUARE FEET



**MAIN FLOOR**  
1150 SQUARE FEET

**Ceiling Heights**  
 Commercial space 10' 4" max and 7'11" under bulkhead  
 Workshop space 10' 5" max and 9' 10" under bulkhead  
 Residential space 9' 3" max and 8' 8" under bulkhead



**IRENE KAUSHANSKY**  
 Broker, B.S.C., A.S.A., CLHMS  
**PHILIP BROWN**  
 Broker of Record, B.S.W., A.S.A.

D: 416.259.2444  
 O: 416.864.3888  
 info@ireneandphilip.com  
 www.kbrealestateteam.com

CAPTURED ON: 13 FEB 2023  
 DIMENSIONS ARE APPROXIMATE AND SHOULD BE CONSIDERED  
 ILLUSTRATIVE ONLY.

3260 sq ft